

# Social Benefits@Henkel

We care of and reward our people.  
Outstanding additional benefits make the difference with us  
Henkel's services are unique and always sustainable.



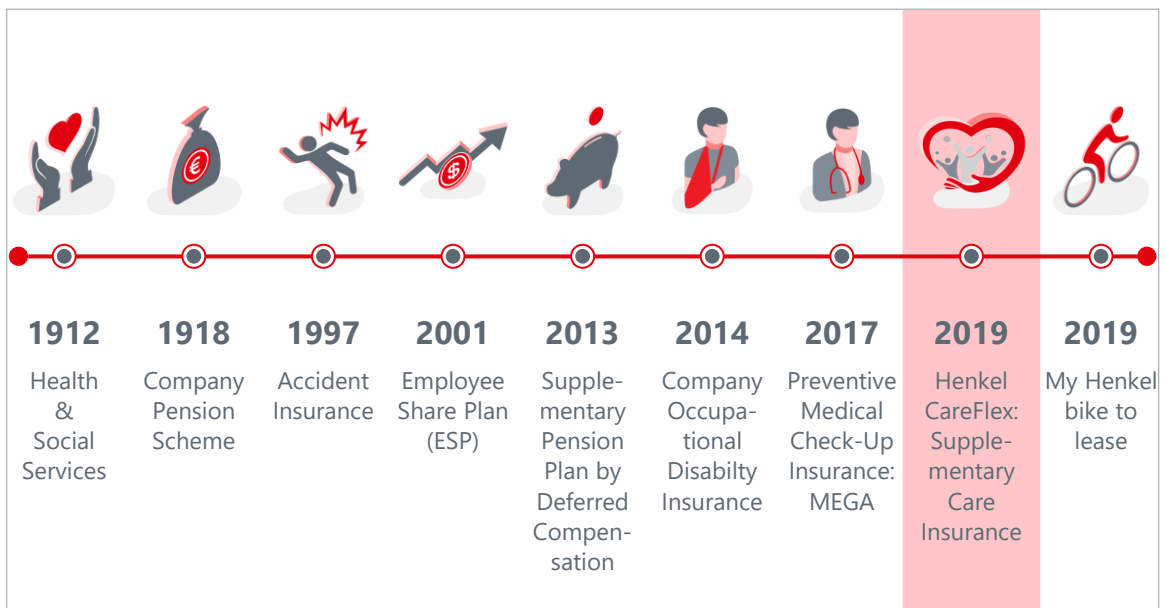
# Henkel – an attractive employer

## We care of and reward our people

### We win and bind our talents!

Over the years, we have continually expanded our Henkel **"Premium Social Benefits"** add-on package to make Henkel even more attractive to you. Together with the statutory and collectively agreed social benefits, the Henkel supplementary package primarily forms a social security package that can promote the health and well-being of every employee and provide support in emergencies.

### Significant Social Benefits@Henkel (chronological)



# Henkel CareFlex: Supplementary Care Insurance

## Basic care modules & modules for the employees



Our "Henkel CareFlex" Supplementary Care Insurance offers you financial security in the event of a need for long-term care. For the first time in Germany, this does not require a health check before taking out the insurance. CareFlex is also independent of the level of employment and provides you with immediate protection without a waiting period after taking out insurance. In the event of a claim, CareFlex offers worldwide protection and premium exemption. Henkel pays the insurance premium of €29 per month. You can also top-up your insurance and insure your family!

### Basic Protection

Insured daily care allowance	PG 1	PG 2	PG 3	PG 4	PG 5
Inpatient service	0 €	1.000 €	1.000 €	1.000 €	1.000 €
Outpatient service	0 €	300 €	300 €	300 €	0 €

\* PG = Care level

- Henkel CareFlex**  
 The Henkel cover for all employees and trainees to close or reduce the gap in the care system
- CareFlex Upgrade**  
 The individual, tailored insurance upgrade
- CareFlex Family**  
 Cover for spouses, life partners, children and parents

